

MyEquipAuctions

INDUSTRIAL DIVISION .com

December 5, 2022

INDUSTRIAL
AUCTIONS



HARRIS AUCTIONS

Tel: 713-462-5800

www.harris-auctions.com

Timed Online Auction Surplus Assets to Ongoing Operations

C-B Gear and Machine, Inc.

Gear Cutting & Hobbing Machines, Thread
Millers, CNC Machines, Tooling, and More!

Surplus Asset Management Experts

Auctioneer: Jean A. Harris, Jr.
Texas Lic. #18210

Pre-Auction Offers Considered for Major Assets

Auction: Tue., Dec. 6, 10:00 am CT

Inspection: Mon., Dec. 5, 9 - 3 CT

NO ONSITE BIDDING

BidSpotter.com

C-B Gear and Machine, Inc.

① 218 N. Sidney St.
Houston, TX 77003

② Locations

③ 4232 Mooney Rd.
Houston, TX 77093

Call: 713-462-5800 for Details

Featured Machines: Fellows 36-6 Gear Shaper, Fellows 645 Gear Shaper, Klingelnberg Worm Thread Mill, (3) Gleason Straight Bevel Gear Generators, (2) Gleason Hypoid Gear Generators, (3) Lorenz Gear Hobbing Machines, (4) Lees-Brodner Thread Milling Machines, (5) Fellows 6Y Gear Shapers, Pfauter P-1250 Gear Hobbing Machine, Vanguard TAC-12 CNC VBM, Vanguard SSK 80/3000 CNC Slant Bed Lathe, 30" x 168" Monarch Engine Lathe, 24" x 144" LeBlond Engine Lathe, Kearney & Trecker Universal Mill, Oliver Drill Grinder, Mart 30" Parts Washer, Gear Testing Equipment, Shop Tools, and More!



30" x 168" Monarch Series 80 Engine Lathe



Fellows Model 36-6 Gear Shaper



Gleason No. 28 Hypoid (Spiral Bevel) Gear Generator



Vanguard TAC-12 CNC Vertical Boring Mill



Vanguard SSK 80/3000 CNC Slant Bed Lathe



Cyclone YV-1200ATC CNC Vertical Boring Mill



Gleason #12 12" Straight Bevel Generator



Pfauter P-1250 Gear Hobbing Machine



Gleason 24 Double Gear Generator

HARRIS AUCTIONS

Online Bidding at:

BidSpotter.com

Auction: Tue., Dec. 6, 10am CT
Inspection: Mon., Dec. 5, 9am - 3pm CT
Call: 713-462-5800 for Details

AMERIKAM (SWISS CNC AND SCREW MACHINE FACILITY) **ONLINE AUCTION**

BIDDING ENDS: TUES, DEC. 6TH

STARTS AT 8:00 AM • STARTS CLOSING AT 6:00 PM ET

LOCATION: 1337 Judd Ave SW • Grand Rapids, MI 49509

Amerikam (Swiss CNC and Screw Machine Facility), after 88 years in business has closed their doors and will be selling all remaining assets via online auction with Orbitbid.com - a Miedema Asset Management Group Company.

- 2012 TSUGAMI S206 Swiss Type CNC Lathe
- 2014 KARL Roll RCTS 040 Cleaning Degreaser Machine
- MIYANO LE-41S CNCN Turning Center
- MIYANO LE-41S CNC Turning Center
- MIYANO BND-34S CNC Turning Center
- MIYANO BND-51S CNC Turning Center
- MIYANO BND-42S5 CNCN Turning Center
- MIYANO BNE-42S CNCN Turning Center
- (8) ACME GRIDLEY RA-6 Automatic Screw Machines
- 2014 FANUC ROBODRILL a-D21MiA5 CNC Drilling Machine
- (4) FANUC ROBODRILL a-T10A CNC Drilling Machines
- FANUC ROBODRILL a-T14iA CNCN Drilling Machine
- (8) DAVENPORT B Automatic Screw Machines
- (2) DAVENPORT B Chucker Type Automatic Screw Machines
- MATSUURA ES-450H CNCN Horizontal Machining Center
- (2) MATSUURA MC-600VF CNC Vertical Machining Centers
- (2) SUNNEN ML-2000-D Honing Machines
- (2) SUNNEN EC-3500E Honing Machines
- SUNNEN MBB-1660 Honing Machine
- SUNNEN MBC-1804-E Honing Machine
- (4) JR AUTOMATION TECHNOLOGIES Custom Built Drilling and Reaming Machines
- MICRON MD-4501-CNC-SA CNC Centerless Grinder
- MAZAK QT-8 CNC Turning Center
- LASER MARKING TECHNOLOGIES Cobalt Dominator 20PF-G Laser Marking System
- PROFICIENT Machine Tool Optical Inspection System
- Roto Finish Vibratory Finisher
- Very Large Assortment of Support Machines Including BRIDGEPORT Mills, Lathes, Optical Comparators, Bar Feeders, MILLER Welders, BARRET Centrifuges, Micro Drills, Part Wringers, Drilling And Reaming Machines, Band Saws, Dust And Mist Collectors, Surface Grinders, Hand Tools, Power Tools, Machine Tooling, Etc.
- Very Large Assortment of Shop Equipment Including Forklifts, Man Lift, Pallet Racking, Shop Ladders, Shop Desks, Tool Boxes, Etc., Assorted Office Furniture, Break Room, Janitorial and Lawn Care, **AND MUCH MUCH MORE**



PREVIEW WILL BE AVAILABLE THE DAY BEFORE THE AUCTION FROM 9:00AM TO 4:00PM AND THE DAY OF THE AUCTION FROM 8AM - 5PM

MIEDEMA'S
ORBITBID®
www.orbitbid.com

For all terms and conditions of this sale go to
bid.orbitbid.com
or give us a call **616-261-4987**



ATTENTION ATTENTION

ONLINE PUBLIC AUCTION



SALE END DATE:

TUESDAY, DECEMBER 6TH • 10:00 AM MT

INSPECTIONS:

MONDAY, DECEMBER 5TH • 10:00 AM - 3:00 PM MT



**RJ RUFF & CO.,
RETIREMENT AUCTION
3883 W. Lower Buckeye
Phoenix, Arizona 85009**



**STEEL FABRICATION
EQUIPMENT,
1000T X 22' PRESS BRAKE,
1 1/4" X 12' PLATE ROLL,
SHEARS, BRAKES, SAWS,
FORKLIFTS, ETC.**

Buyer's Premium: 13.00%



BidSpotter



Sale Conducted by:

The Arizona Auctioneers.

Auctioneer: Stephen M. Sommers

• AUCTIONEERS • APPRAISERS • LIQUIDATORS •

602-258-6981
PHOENIX

602-257-1935
FAX

1802 South First Avenue • Phoenix, Arizona 85003
www.arizonaauctioneers.com

METAL FABRICATION EQUIPMENT LIVE ON LOCATION AUCTION

204 KAMLAR RD. • ROCKY MOUNT, NC • NASH COUNTY

WEDNESDAY, DECEMBER 7TH • 10:00 AM

After over 50 years of supplying quality metal fabrication equipment and service throughout the United States, the owners of Eastern Tool, Inc. of Rocky Mount, NC have decided to retire and are closing their operations. They have chosen Country Boys to assist with the final complete liquidation all new fabrication equipment, used fabrication equipment, tooling, parts, tools, forklift, rigging equipment, trucks, and other items.

We have a brief listing below that highlights the larger items but there is simply no way to detail the enormity of the specialty parts inventory that includes all types of equipment repair parts, accessories, supplies, and so much more. This inventory has been built, maintained, and continued for the entire life of the company. It includes "new old" stock parts that are impossible to find, "new" parts for the latest model machines, and everything in between. The items also include new and used tooling, repair parts, replacement components... literally thousands of small items. We will also be selling all of the parts room shelving, racks, displays, office furniture, etc.

Eastern Tool was also had a moving and rigging division that specialized in moving large and hard to access equipment. There is a large amount of rigging and transportation equipment at this auction as well. This includes all types of chokers, lift cables, lift chains, custom spreader bars, new roll stock cable, clevis hooks of all sizes, chains, binders, straps, etc. some new and some used. There is also several sets of equipment moving "skates" and dollies with huge capacities, surplus forklift forks, lifting equipment, and other items.

The repair shop has several large fully equipped tool boxes, large amounts of large wrenches & sockets, specialty tools, completely loaded parts cabinets, work benches, work tables, etc. Basically everything you could ever need to construct, repair, service, and maintain all types of metal fabrication equipment, vehicles, and machinery.



VEHICLES & FORKLIFTS: 2003 FORD F150 XLT pickup - extended cab, gas, 2WD, ONLY 45,000 miles - 1FTRX17L73NB373534

1990 INTERNATIONAL 4900 rollback - DT466, PTO steel body & winch, rear hitch, ONLY 245,250 miles - 1HTSDTVR3LH236902

HYSTER T120 forklift - 12,000lb capacity, LP gas, non-marking cushion tire, 2,073 hours

METAL FABRICATION EQUIPMENT: (NEW) EASTERN Hydraulic Swing Beam Squaring Shear Machine, MODEL H - 1035 - SERIAL 2109194, 126" Sheet Size, 10 gauge mild steel capacity, 10 Horsepower main motor, 3-Phase 220/440 voltage, ESTUN E21 controls, foot pedal controls, Machine weight 10,500 pounds, dimensions 157" x 63" x 63"

(NEW) EASTERN Powered Plate Bending Roll, MODEL PR8010-E - 80" X 10 gauge mild steel capacity, 3-Phase 220/440 voltage, Dual Control - pedestal control panel & foot pedal control (NEW) EASTERN Powered Plate Bending Roll, MODEL PR8010-E - 80" X 10 gauge mild steel capacity, 3-Phase 220/440 voltage, Dual Control - pedestal control panel & foot pedal control (NEW) ACRA Mill Drill Machine, Model RF-31 - 9" X 29" table, R-8 spindle, single phase, with cabinet base

BIRMINGHAM Milling Machine, 10" x 54" table, variable speed head, R-8 spindle, hardened bed BRIDGEPORT Milling Machine - SERIAL 12/BR 219980, 9" X 42" table, 2HP variable speed head, R-8 spindle, (some tooling included)

LAGUN Milling Machine - SERIAL 14672, MODEL FTV-1S - 10" X 44" table, variable speed head, R-8 spindle, SERVO power feed, ACCURITE DRO

LAGUN Milling Machine - SERIAL 23009, MODEL FTV-1S - 10" X 44" table, variable speed head, R-8 spindle, SERVO power feed, SONY DRO

CINCINNATI base - BRIDGEPORT HEAD Vertical/Horizontal milling machine, 10" X 42" table, variable speed head, R-8 spindle, powered feed table

KERNEY & TRECKER Horizontal Milling Machine - SERIAL 9-7237, MODEL 5HP-2C - 12" X 50" table, #50 MMT spindle, power feed table, (some tooling included)

MILWAUKEE Horizontal Mill - SERIAL 18-3314, MODEL H #2 PLAIN - 10" X 50" table, powered feed table, #50 MMT spindle, (some tooling included)

EASTERN - Horizontal Lathe - MODEL DL26120, 26" Swing X 120" Centers, 3-jaw & 4-jaw chucks, taper attachment, steady rest, rapid traverse on carriage, 4-1/8" spindle hole, (well tooled)

HARRISON - Horizontal Lathe - MODEL 15, 15" Sing X 50" Centers, 3-jaw & 4-jaw chucks, Steady rest tool, (well tooled)

SOUTHBEND - Horizontal Lathe - MODEL CL10, 10" Swing X 36" Centers, 3-jaw & 4-jaw chucks, taper attachment, on cabinet, (well tooled)

TOOLING CARTS & CABINETS: several nice tooling carts loaded with milling machine tooling, lathe tooling, cutting equipment, etc.

NEW MACHINE TOOLING & PARTS INCLUDE: end mills, taps & dies, drill bits (including jobbers, long series, taper shank), carbide burrs, Cushman drill chucks and arbors, carbide inserts, bandsaw blades, abrasives, lathe chucks, quick change tool posts & holders, cutting/cooling oils & fluids) clamping tools for milling machines, machine vises, equipment parts, precision tooling & accessories, and more!

USED MACHINE TOOLING & PARTS INCLUDE: drill bits, reamers, cutters, taps & dies, R-8 tooling, lathe tooling, milling cutters, machine vises, dividing head, rotary table, tapping heads, etc.

RIGGING & SHIPPING EQUIPMENT: HD equipment dollies & skates, pallet jack, spreader bars, nylon & cable chokers of all sizes, chains, binders, ratchet straps, hooks, clevis, hand trucks, metal salvage bins, Johnson bars, and more!

TOOL BOXES & TOOLS: large toolboxes filled with tools, sets of large wrenches and sockets, cabinets and boxes full of specialty tools, measurement tools, power tools, hand tools, etc.

LARGE PARTS ROOM & WAREHOUSE: rows and rows of machine parts, switches, accessories, supplies, inventory, etc.

FIXTURES: large amount of metal parts room shelving, cabinets, office furniture, office equipment, and other items

WOOD WORKING EQUIPMENT: POWERMATIC 18" surface planer

PARKS 12" surfacing planer • DELTA 6" joiner • DELTA 6" X 48" belt sander • CLAUSING drill press

THIS AUCTION WILL BE HELD LIVE ON LOCATION AT THE EASTERN TOOL FACILITY WITH ONLINE BIDDING ALSO AVAILABLE ON THE LARGE ITEMS.

**OPEN HOUSE & PREVIEW WILL BE HELD ON
TUES, DEC. 6TH • 9AM - 4PM AND ON
WED, DEC. 7TH • 8AM UNTIL TIME OF AUCTION.**

TERMS & CONDITIONS: PAYMENT IN FULL AT TIME OF AUCTION - Cash, check, and cards accepted (convenience fee charged on all cards).

Sales tax will be charged and collected by CBA on all items (except titled vehicles and trailers which will be charged and collected by the DMV).

EVERYTHING IS SOLD "AS IS, WHERE IS" - Item descriptions, condition, identification numbers, make, model, etc. made by CBA are intended to be accurate, however CBA, employees, and associates hold themselves harmless for the information provided. It is the sole responsibility of the Bidder to inspect the items prior to bidding and do any and all research or verification they deem necessary.

NO BUYERS PREMIUM FOR ONSITE BIDDERS - ONLINE BIDDERS SUBJECT TO ONLINE BIDDING FEES - Online bidder fees are detailed on the online bidding platform for each auction.

PUBLIC & DEALERS WELCOME - NOT RESPONSIBLE FOR ACCIDENTS

COMPLETE DETAILS ONLINE AT WWW.COUNTRYBOYSAUCTION.COM

Country Boys Auction & Realty, Inc - Call (252) 946-6007

1211 W. 5th St, Washington, NC, 27889 - NCAL 765, SCAL 3327, VAAL 633

www.countryboysauction.com

online bidding provided by

BidSpotter



MACHINERY NETWORK AUCTIONS

WEBCAST AUCTION

STARTS
WEDNESDAY
10AM PT
DECEMBER
7



PLANT CLOSURE due to Owner Retiring Major Steel Fabricator & CNC Facility



DIMIC STEEL TECH

Featuring Equipment as Late as 2021

SALE DATE: December 7 & 8 at 10AM PT

INSPECTION DAY: Tuesday, December 6 from 9am-4pm PT (By appointment only)

AUCTION LOCATION: 145 N 8th Ave, Upland, CA 91786

**\$3 MILLION
VALUATION**



LASERS

- Bystronic Bysmart 6000 Fiber Laser w/Bytrans 4020 Extended Automation, 160" x 80", 6000 Watt Fiber, Automatic Nozzle Changer w/40 Positions, Torit Dust Collector, New 2020
- Bystronic BySpirit Pro 4020 Fiber Laser, 4.4 KW CO₂, 157.5 x 78.7" travels, ByLaser 4400 laser source, Donaldson Torit dust collector, 6000 cutting hours, s/n R1419024, New 2014

PRESS BRAKES

- 220 Ton x 161" Bystronic Xpert 200/4100 cnc Hyd. Press Brake, Enlarged Stroke, Hydr. Clamping, (2) Dynamic Sheet Supports, 5-Axis CNC Back Gauge, New 2014, 400K Replacement cost, Huge compliments of tooling
- 350 Ton x 14' Cincinnati 350AFx12' CNC Press Brake, 6 Axis, Adaptive Autoform control, pit req., s/n 48974
- 230 Ton x 14' Cincinnati 230CB x 12 NC Press Brake, 4 Axis, Autobend 7 control & B.G., pit req., s/n 40540
- 105 Ton x 118" Gasparini PBS 105/3000 CNC Press Brake, 4 Axis, Dealern control, s/n 1099-4116, New 1999
- 110 Ton x 122" Komatsu PHS 110x310 CNC Press Brake, 4 Axis, KRAPS III control & NC back gage, s/n PT2, New 1991
- 60 Ton x 6' Cincinnati 60CBII-4 CNC Press Brake, Cincinnati 2 axis control, s/n 50381
- Loads of Willa & Conventional Press Brake Tooling

CNC TUBE BENDER

- VLB Group EB 83 CNC 3.26" Max dia., s/n V00328, New 2020, 375K Replacement Cost
- Ercolina TBS130VS, 5" tube cap., touch screen control, s/n 9114004, New 2014
- Ercolina SB-48, 2" tube cap., New 2008

CNC MACHINING & TURNING

- Chevalier Uni5X-400 5-Axis VMC, Fanuc 0iMF, 29.5" x 24" x 21.7" travels, 150 deg A axis, 360 deg. C axis 12.6" face plate on trunnion table 12K RPM, CT40, 30 ATC, s/n FMC15CP01, New 2019
- Sharp SVG-8540A 4-Axis VMC, Fanuc 0iMD, 84.6" x 39.7" x 31.1" travels, 8K RPM, CT50, 40 ATC, s/n 012008031482, New 2008
- MAG Fadal VMC-4020FX 4-Axis VMC, Fanuc 0iMC, 40" x 20" x 20" travels, 10k RPM, CT40, 24 ATC, s/n 032006018551, New 2006
- Fadal VMC6030HT VMC, Multi Processor CNC, 60" x 30" x 24" travels, 10K RPM, CT40, 30 ATC, s/n 032006018551, New 2006
- Haas VF-2D VMC, 30" x 16" x 20" travels, s/n 35250, New 2004
- Hwacheon HiTech 200C CNC Turning Center, Fanuc 0i-TC control, 10" chuck, 3" bar cap., t/stk, s/n M017354A1FT, New 2006

PLATE BENDING ROLLS

- 12' x 1/4" Round PS205, s/n OD2574, New 1981
- 10' x 14 Ga JM Montgomery 12014B, s/n 1001459
- 12' x 1/4" Round PS205, s/n OD2574, New 1981
- Assorted Niagara, Pexto & Meyer Rolls

SAWS

- Marvel 380A-PC60 Automatic Vertical Tilt Frame Band Saw, PC3 programmable control, 15" x 20" cap., +/- 60 deg tilt, s/n E380-0254PC3, New 2015
- Amada H-650 HD Semi Auto Horizontal Band Saw, 16" x 25" cap., mitering cap., s/n 483535, New 1984
- DoALL ZS-3620 Vertical Band Saw, 20" hgt x 36" throat, s/n 31-662396
- Elumatec DG79 Double Mitre Saw, 15" blade, 4 HP motors, pneumatic feeds, s/n0799133182,
- Haberie H350 Cut Off Saw

INSPECTION & QC

- Hexagon Romer Absolute RA-7325 Portable Measuring Arm, 8.2' range, New 2017
- Rockwell Hardness Tester, Height gauge, 4' x 6 granite surface plates

WELDING CELL & ASSORTED WELDING EQUIPMENT

- ESAB Swift Arc SL Welding Cells, Kuka KR16 robot, (2) 36" x 120" Welding Positioners, Fronius TPS 400i & ESAB Warrior 500i Welders, Robot & Weld controls, safety enclosure, New 2016
- (12) Miller XMT450MPa, Deltaweld 451, Millermatic 252, & CP300 units



- Lincoln Precision TIG 375, Power MIG 350, Power MIG 300
- ESAB MIG U5000i
- (6) Several Weldsale Steel Acom tables up to 5' x 20'
- Miller & Bernard Booms, Wire feeders, & peripherals
- 50 KVA ACME 3-24-50 Spot Welder

ASSORTED FABRICATION MACHINERY

- Amada Pega 306072 CNC Turret Punch, New 1988
- Amada Togu III Die Grinder, New 2002
- Mubea HIW750 Iron Worker
- Whitney 652 & Strippitt Fabricator Single Station Punches
- Haeger 824H Insertion Press, Boschert LB15 Corner Notcher
- Chicago W36 Apron Brake, Lockformer, Wysong Shear, Mittler Bead Roller

FINISHING & DEBURRING EQUIPMENT

- Goff Automated Shot Peen Machine, 52" rotary table (2) 10 HP Shot wheels, media recalamtion and dust collector
- Almco OR-25 VLR Vibratory Finishing Bowl, 98" diam, 32 C.F., 20 HP
- Timesaver 137-1HDM Belt Sander with dust collector

TOOLROOM MACHINERY

- 17" x 60" Webb 17Gx60 Engine Lathe
- Bridgeport & Birmingham Vertical Mills
- Ridgid & Thread-O-Matic Pipe Threaders
- Delta Table Saw and Over Arm Saw
- Pin router

FACILITIES

- 30 HP Kaeser AS 30T Rotary Screw Air Compressor with integrated refrig air dryer, New 2015
- 50 HP Kaeser BS 61 Rotary Screw Air Compressor with dryer
- Pallet Racking, Cantilever racks, Digital scales, work benches, Tool cabinets and fab tool storage

ROLLING STOCK

- Ford F-650 Super Duty Stake Bed Truck, Dually, Cummins TD, New 2019
- Ford F-650XL Super Duty Stake Bed Truck, Dually, Cummins TD, New 2012
- Ford F-350 Stake Bed Truck, Dually V8 Navistar TD, New 2003
- Custom Built RV
- Ford F-150 P/U Truck
- Toyota, Nissan, Caterpillar, Clark & Viking Forklift, up to 10k Lbs Cap, LPG & Elect, 9 available as new as 2018
- Marklift Scissor Lift

HUGE QUANTITIES OF SHEET METAL

GO ONLINE TO REGISTER TO BID FOR THIS AUCTION!



MACHINERY NETWORK AUCTIONS

15910 Ventura Blvd., Suite 1410, Encino, CA 91436

Tel: 818.465.6700 | <http://www.machinerynetwork.com>



HIGH END CNC MACHINES CNC CONSIGNMENT ONLINE AUCTION



**75 E Palatine Road
Prospect Heights, IL 60070**
BID ONLINE AT: BidSpotter

BEGINS: TUES, NOV. 29TH • 9:00 AM CST
ENDS: WED, DEC. 14TH • 10:00 AM CST



DO YOU HAVE MACHINES TO SELL???
CALL 312-280-1234

Go to: www.premierarg.com for further updates

Need an auction? Give us a call
312-280-1234



MACHINES FOR SALE?
CALL 312-280-1234

REGISTER & BID ONLINE - Buyers Premium: 18%
www.premierarg.com

Premier License: 044000209 Glenn Gray License: 041000721

Premier Asset Recovery Group: 77 E. Palatine Rd., Prospect Heights, IL 60070

312-280-1234 • info@premierarg.com

WEBCAST / ONLINE AUCTION

COMPLETE PRECISION MACHINE SHOP PLANT CLOSURE - ALL ASSETS MUST GO!



23080 Groesbeck Hwy.
Warren, MI 48089

**LOTS OPEN FOR BIDDING:
NOVEMBER 28th - 10 AM EDT
LOTS BEGIN TO CLOSE:
DECEMBER 13th - 10 AM EDT**

INSPECT ONSITE AND BID ONLINE / TIMED AUCTION

Inspection Monday, Nov. 28th through Dec. 2nd from 9:00 AM to 4:30 PM est or by Special Arrangement.



Olympia V-40 CNC Turning (57" Swing)



Dianichi CNC Lathe (62" x 196.5")



Haas VF-8 VMC



Fadal 60-30 VMC (2 Available)



LeBlond Lathe (192" CC)



Cincinnati Hydro VBM

Horizontal Boring Mills, Vertical Turret Lathes,
CNC Turning, Long Bed Lathes, Engine Lathes,
Vertical Machining Centers, Radial Arm Drills, Saws,
Jig Bore, I.D. Grinders, Surface Grinder, Toolroom,
CMM, Heavy Lots of Tooling, Inspection Equipment,
Fork Trucks, Steel Lots.



4" Shibaura HBM



Asset Management Group

20501 Hoover St. • Detroit, MI 48205 USA

Ph: 313-499-6490 • Fx: 313-839-9600

www.amgrouponline.com • Chip@AMGrouponline.com

Online Bidding at
BidSpotter

TIMED ONLINE PUBLIC AUCTION

COMPLETE CLOSURE – ALL ASSETS MUST GO! GTM - GROSSE TOOL & MACHINE

AUCTION DATE: DECEMBER 13th - 10 AM EDT

INSPECT ONSITE AND BID ONLINE / TIMED AUCTION



Haas VF-8 VMC



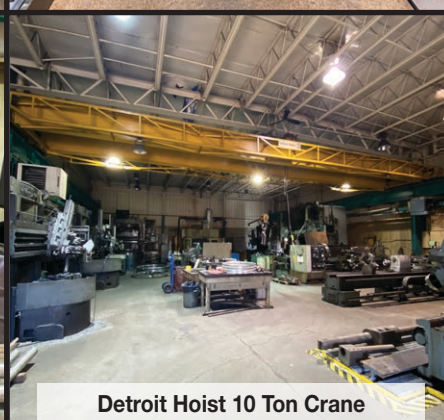
Starrett CMM



Marvel Vertical Saw



Bryant I.D. Grinder



Detroit Hoist 10 Ton Crane



LeBlond Makino 19" x 60"



Nardini 44" x 144" Lathe



Pratt & Whitney Jig Borer



DeVlieg 4H-60 Boring Mill



Asset Management Group
20501 Hoover St. • Detroit, MI 48205 USA

Ph: 313-499-6490 • Fx: 313-839-9600

www.amgrouponline.com • Chip@AMGrouponline.com

Online Bidding at
BidSpotter

★ ★ **ONLINE ONLY AUCTION** ★ ★



134 Avocado Street
Springfield, MA 01104

**MUST
VACATE
PREMISES**

DATE: BIDDING CLOSES THURSDAY, DECEMBER 15TH
Inspection: Wednesday, December 14th from 9:00 AM – 4:00 PM

BOUTIQUE HERBAL TONIC BLENDING & BOTTLING COMPANY



• **HIGHLIGHTS** •

- Like-New Cold Press Line
- 2019 14-Valve In-Line Filling/Capping Line
- Tilting Frame Hydrostatic Bladder Presses
- Steam Jacketed Mixing Tanks & Kettles
- Machine Tools & Maintenance
- Labeling & Packaging
- Air Compressors & Steam Generator
- Benchtop Scales, Piston Filler, and Brewing Kettles
- Refrigeration Equipment

Huge Selection of Stainless Steel Tables, Benches, Spare Parts, Accessories, and much more!

***Terms: To be sold in accordance w/CRG terms as published on web & auction catalog. MA Lic# 232
All COVID-19 protocols will be implemented. Please visit our website for details.***



www.crgllc.com • (800) 300-6852

2



WEBCAST AUCTIONS



WEBCAST AUCTION OF SURPLUS MACHINING AND FABRICATING EQUIPMENT INCLUDING ENGINE LATHES TO 36" X 216", FABRICATING MACHINERY, TOOLROOM MACHINERY, WELDING, SHOP AND SUPPORT EQUIPMENT

SURPLUS EQUIPMENT FROM

GASTON COUNTY DYEING MACHINE

1310 Charles Raper Jonas Hwy. • Mt. Holly, North Carolina 28120

Northwest Suburb of Charlotte, North Carolina

SALE DATE: THURSDAY, DECEMBER 15TH STARTING AT 10:00 AM

INSPECTION: By appointment only with jeffjr@cia-auction.com

FEATURING:

LATHES - ALL TYPES

- 36" X 126" POREBA TAK-90A1-E2 ENGINE LATHE
- 36" X 216" AMERICAN 2516 ENGINE LATHE
- OTHER ENGINE LATHES BY LEBLOND AND MONARCH TO 20" X 168"
- (3) GISHOLT TURRET LATHES TL5, 3L, 2L
- (3) JONES & LAMSON TURRET LATHES
- LARGE QUANTITY CHUCKS AND TOOLING

FABRICATING MACHINERY

- BUFFALO ANGLE ROLL, 5-1/2" ARBOR, TOOLING
- PULLMAX X8 BEVELLER
- (6) TANK TURNING ROLL SETS
- 150 KVA TJ SNOW SPOT WELDER
- CIRCLE SHEAR, POWER SHEET ROLL
- WELDERS, WELDING TABLES AND ACCESSORIES

TOOLROOM MACHINERY

- 84" GRAY DOUBLE COLUMN VTL
- (2) ENSHU 650 CNC VMC'S
- SPEED-LAP 24 LAPPER
- MITTS & MERRELL KEYSEATER
- TOOL GRINDERS BY KO LEE, OLIVER, G&L
- HEAVY ARBOR PRESSES, GRINDERS, MILLS, DRILLS, SAWS
- ROTARY TABLES, ANGLE PLATES, VISES, TOOLING

SUPPORT EQUIPMENT

- (15) SELF DUMPING HOPPERS
- 10 TON VEHICLE LIFT
- (5) FREE-STANDING JIB CRANES
- CLARK FORKLIFT
- FIREPROOF CABINETS, CARTS, STEEL TUBS
- MATERIAL HANDLING, PLATE GRABBERS, CHAINS

Cincinnati Industrial Auctioneers, Inc. - License No. 5610

Joseph M. Luggen - License No. 9333

BidSpotter

18% BUYERS PREMIUM IN EFFECT FOR ALL PURCHASES



WEBCAST AUCTION OF COMPLETE TOOL & DIE SHOP INCLUDING HAAS CNC VMC'S AND TURNING CENTER, GANG TOOL CNC LATHE, SODICK AND FANUC EDM'S, LATHES, GRINDERS, MILLS, INSPECTION, TOOLING AND SHOP EQUIPMENT

DIETECH TOOL & DIE

425 W. Theresia Rd. • St. Marys, Pennsylvania 15857

120 Miles Northeast of Pittsburgh, PA

SALE DATE: TUES, DECEMBER 20TH STARTING AT 10:00 AM ET

INSPECTION: Monday, December 19th from 10:00 AM - 4:00 PM

FEATURING:

CNC MACHINING

- HAAS MODEL DT-1 HIGH SPEED CNC VMC, 4TH AXIS, FULL MILLING (2014)
- HAAS MODEL SL-30T CNC TURNING CENTER (2002)
- PRODIGY MODEL FANUC GT-27 CNC GANG TOOL LATHE (2009)
- HAAS MODEL VF-1D CNC VMC (2002)
- HAAS MODEL VF-2 CNC VMC
- TOOLHOLDERS, TOOLING, ACCESSORIES

WIRE AND SINKER EDM'S

- SODICK MODEL AQ325L CNC WIRE EDM (2000)
- FANUC ROBOCUT ALPHA-1C CNC WIRE EDM (1998)
- FANUC ROBOCUT ALPHA-1B CNC WIRE EDM (1996)
- SEVEN METAL DRILLMATE 1376 EDM HOLE POPPER
- SODICK MOLD-MAKER 3 AND A35 CNC DIE SINKER EDM'S
- EDM TOOLING AND ACCESSORIES

GRINDERS - ALL TYPES

- 13" X 40" MIGHTY CYLINDRICAL OD GRINDER
- 16" X 32" SHARP MODEL SH-1632 HYDRAULIC SURFACE GRINDER
- 10" X 20" ACER MODEL AGS-1020 HD HYDRAULIC SURFACE GRINDER

- 8" X 18" MITSUBI MODEL MSG-250MH SURFACE GRINDER W/OPTICAL DRESSER
- (3) 6" X 18" REID MODEL HYD SURFACE GRINDERS
- GRINDING ACCESSORIES, TOOL GRINDERS AND RELATED

TOOLROOM MACHINERY

- (2) 18" X 60" SHARP MODEL 1860 ENGINE LATHES (2016)
- 16" X 48" JET ENGINE LATHE
- 3 HP SHARPE & COMET VERTICAL MILLS
- SUNNEN MODEL MBB-1660 PRECISION HORNING MACHINE
- MACHINE ACCESSORIES, VISES, PERISHABLE, AND INDEXABLE TOOLING

INSPECTION AND SHOP EQUIPMENT

- BROWN AND SHARPE MODEL GAGE 2000 CMM
- 14" MICROVU MODEL S15 OPTICAL COMPARATOR
- GASBARRE SINTERITE MODEL 24X24X24 ELECTRIC HEAT TREAT FURNACE
- 20 HP ATLAS COPCO MODEL GA15FF AIR COMPRESSOR
- VERY CLEAN SHOP EQUIPMENT, WORKBENCHES, RACKS, HOPPERS

Cincinnati Industrial Auctioneers, Inc. & HGR Auctions

18% BUYERS PREMIUM IN EFFECT FOR ALL PURCHASES

BidSpotter



**CINCINNATI
INDUSTRIAL
AUCTIONEERS**

auctioneers | appraisers | since 1961

Check our website for ongoing & future auctions!

For Photo Gallery & Sale Catalog & Additional Information Visit:

www.cia-auction.com

PUBLIC ONLINE AUCTION

INSPECT ONSITE AND BID ONLINE

AVCORP AEROSPACE COMPOSITE FABRICATION

FULL FACILITY CLOSURE

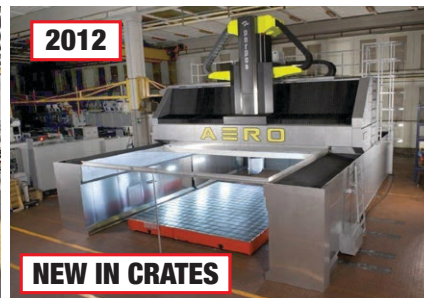
ONLINE AUCTION CLOSING: WEDNESDAY, JANUARY 25 STARTING AT 11:00 AM PST

2-DAY INSPECTION: MONDAY, JANUARY 23, AND TUESDAY, JANUARY 24 FROM 9:00 AM TO 3:00 PM PST

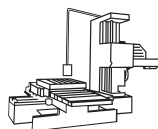
LOCATION: 1551 WEST 139TH STREET, GARDENA, CA 90249



2012 PARPAS XS-75 CNC 5-AXIS GANTRY MILL, 2008 CINCINNATI VIPER 6000 FIBER PLACEMENT SYSTEM, (3) BERTSCHE P5 5-AXIS VERTICAL MACHINING CENTERS, 2010 DEA DELTA SLANT 30.63.20 CMM, 2008 CMS 5-AXIS HIGH SPEED ROUTER, (9) ASC & TEC AUTOCLAVES FROM 2014, 2013 CINCINNATI CNC TAPE LAYER, OVERHEAD CRANES TO 30 TON CAPACITY, MACHINE SHOP, GENERATORS, AIR COMPRESSORS, RACKING & RELATED ITEMS



IN CONJUNCTION WITH:



**INDUSTRIAL
MACHINE TOOLS, INC.**
www.IndustrialMachineTools.com

ONLINE BIDDING PROVIDED BY

BidSpotter

BUYER'S PREMIUM:
18% FOR ALL PURCHASES.
CHECK WEBSITE FOR COMPLETE TERMS

WWW.UNITEDASSETSALES.COM

UPCOMING INDUSTRIAL AND HEAVY EQUIPMENT AUCTIONS



**NOVEMBER
DAY 1**

**NOV 30
10 am ET
LIVE &
ONLINE**



**NOVEMBER
DAY 2**

**DEC 1
10 am ET
ONLINE
ONLY**



**TILE
AUCTION**

**DEC 6
10 am ET
ONLINE
ONLY**

Heavy Equipment • Welding • Rigging
Paving • Home Improvement • Forklifts
Furniture • Bathroom, Kitchen, & Floor Tile
Power Tools • Trucks • Roll-Offs • Trailers
Generators • Job Completion Surplus & More!

SoldOnCompass.com • 800-729-6466

★★★★★ BANK-DIRECTED SECURED CREDITOR ★★★★★

PUBLIC AUCTION

**Mechanical HVAC Contractor • FasTrack Mechanical Inc.
Vehicle Fleet, Tools, and Inventory**

Highlights of the Auction

Exceptional vehicle fleet with over 20 service vehicles, Ford F-550 with man-lift, Kubota SVL 75-2 track skid steer, Kubota KX057-4 excavator, Clark TMX17 36v forklift, huge assortment of contractor tools, sewer snakes, plasma cutters, Edco concrete saw, **large working inventory** of furnaces, fans, heaters, parts, and much more.

Lots begin closing at 10am CT

Thursday, December 8, 2022

Assets located in

Indianapolis, Indiana



For more information:

HyperAMS.com/imt

HYPER 
asset maximization services

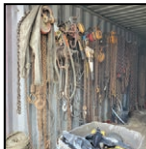
WEBCAST AUCTION

COMPLETE RIGGING AUCTION - NO ON-SITE BIDDING TRI-STATE MECHANICAL MACHINERY RELOCATION & RIGGING

6107 N FARES AVE. IN EVANSVILLE, IN 47711
THURS, DECEMBER 8 at 9am CT

INSPECTION: Day prior to auction from 9am - 4pm

FORKLIFTS - High Reach 80,000-lb., Model HRI-RIGGER-80K • **Hyster** 18,000-lb., Model S150A w/Counterweight • **Hyster** 12,500-lb., Model S125A • (10) **Toyota**, **Yale**, **TCM**, **CAT** & **Clark** 2,000-12,000-lb. • **Gallion** 125A Rough Terrain Crane • **P&H** All-Terrain Crane w/60' Boom • **TRUCK TRACTORS** - **Western Star** WA1230640 w/Sleeper • **Mack** 600 w/Sleeper • **Peterbilt** 379, **Kenworth** T400 • **TRAILERS** - **Trail King** 53' Lowboy Double-Drop • **Landoll** 53' Roll-back Step-deck • Flatbed & Step-Deck Trailers • **MISCELLANEOUS** - **Tulsa Winch** 45,000-lb. Winch • Forklift Booms & Stands • **Spanco** A-Frame Gantry System • Attachments, Chains, Slings, Machinery Skates to 120,000-lb. Capacity • Spreader Bars • I-Beams • Propane Tanks • Shop Equipment • Steel Shipping Containers • Steel Plate • Hot Pressure Washer • Vehicles • **Chicago** Manual Brake • Welders • Air Compressors • Hoists • Tools & Much More



18% Buyer's Premium w/ bidspotter.com & proxibid.com | Thomas Bowling - IN Lic. #AU11900025, MBA-AC3100015



MYRON BOWLING
AUCTIONEERS, INC.

(513) 738-3311 | MyronBowling.com

WEBCAST AUCTION

NO ON-SITE BIDDING

ARAIZA COMPANY, LLC

211 INDUSTRIAL BLVD IN TULLAHOMA, TN 37388

FRIDAY, DECEMBER 9 at 10am CT

INSPECTION: Day prior to auction from 9am - 4pm

2015 DMG Mori DMU 50 Full 5-Axis Champion CNC VMC • **2014 DMG Mori Dura 5100 CNC VMC** • **2012 Doosan Lynx 220 CNC HTC** • **Mazak Mazatec V-515 CNC VMC** • **2012 LNS Alpha SL65S 75"** Auto Bar Feeder • **2014 Faro Arm** • **2013 Optiflex 2 Powder Coating System** • **Vectorwave Spectra Coat Spray Gun System** • Spray Coat Booth • Powder Bake Oven • Convection Oven • **Grieves** Furnace • Chamfering Machine • **Chevalier FSG-618M & Doall D1216-12 Surface Grinders** • Horizontal Mills • **Central Machinery 30"** Shear, Brake & Combination Machine • Plasma Cutting Tables • Welders • Band Saws • **Cat 40 & 50** Taper Tool Holders • Tool Setter • Inspection Equipment • (New) Pneumatic Tools • Air Compressors & Dryers • **Skat Blast** Double Dry Blast Cabinet • **Brother** Prog. Sewing • Large Quantities of Assorted Steel & Aluminum Plate, Aluminum & Steel Cutoffs & Steel Stock • Support & More



18% Buyer's Premium with Bidspotter.com | Thomas Bowling, Principal Auctioneer - TN Lic. #7121



MYRON BOWLING
AUCTIONEERS, INC.

(513) 738-3311 | MyronBowling.com



Asset Sales, Inc.
800-870-6442

LIVE
AUCTION
ONLY



SHEET METAL FABRICATION SHOP

SATURDAY, DECEMBER 10, 2022—11:00 AM

234 Wild Flower Dr • Ellenboro, NC 28040

Liquidating the late John Williams (Owner) American Air Filtration's Sheet Metal Fabrication Shop.

Property has been sold. Everything Must Go! Selling to the Bare Walls!



EQUIPMENT/TOOLS:

- **Tru Fab** Shearing Machine Model P90-10 HS, Serial b6-108 - 90 Ton
- **Roussele** Cutting Machine Model CE156 Serial 743 086, Cutting Thickness 6"
- **Chicago** Leaf Brake Model S416, Miller Welder Model CP25015,
- **Tennsmith** Angle Shearer Model SN, Serial 16518 16 Gauge
- **Pexto** Roller

- **Pexto** Bearer Model 3617-C, Serial 244-2-83- 18 Gauge Pipe Bender
- **Columbia** Shearing Machine Model W160-3, 10'
- **Pexto** Bearer Model 66178, Serial 12711,
- **Wysong** Model 7A-6 3" Rolls, 4' Long
- 2- **Kalama** 200 ¾" Cutting Saw Model 9A-W,
- 2- Lockformer
- **Jet** Finger Break Model # 1648, Serial 2504,

- **Miller** AC/DC Gas Welder Model 33A/BP
- Air Compressor- 80 Gal. 5 HP, Single Phase, 2 Stage.
- Vices & Grinders
- Miter Saw on Stand, Table Saw
- Misc. Sheet Metal Tools
- **Rockwell** Drill Press
- Other Misc. Hand Tools & Tool Boxes.
- FIXTURES:**
- Metal Bins,
- Steel Work Tables & Carts
- Scrap Sheet Metal

TERMS: Cash, Check w/Bank Letter of Credit, MC/VISA (3% Charge), NO BUYERS PREMIUM! 10 day to Move! Announcements day of Auction takes precedent over any advertisement written or implied. Reserve the right to add or delete. Everything sold as is with no warranty expressed or implied. Not Responsible for Accidents, Theft, or Losses before, during or after Auction.

NCAL 4977 • Shelby NC • Auctioneers: Bob Melton NCAL 166 • 704-692-0406 | Ronny Causby NCAL 37 • 828-443-8299

ONLINE ONLY AUCTION!!!

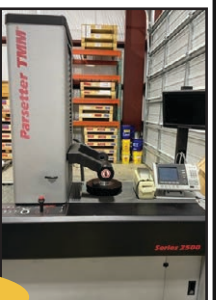
Surplus to the Ongoing Needs of GE Aviation

502 Sweeten Creek Ind Drive • Asheville, NC

Ends: December 20, 2022 From 11:00 AM EST

Viewing Date: By Appointment Only

Contact Us +1 475.273.0268 For Inspection Appointments



3 Items Available

REGISTER TO BID ONLINE FOR Sunnen ML-3500 Precision Hone, (2) Parlec Parasetter TMM 2500 & 2000 Tool Pre-Setters

Buyers Premium: 18%



LINK AUCTIONS
Equipment Appraisals | Global Auctions | Industrial Asset Remarketing

Under the Management of:



CHAIN
ASSET MANAGEMENT SOLUTIONS

631.257.0252 | Cell: 631.445.2315 | auctions@linkauctions.com
www.LinkAuctions.com

https://chainams.com • (203) 561-8866

ONLINE AUCTION

245 PONY DRIVE • NEWMARKET, ONTARIO

SALES CLOSES: DECEMBER 13TH • 10:30 AM

INSPECTION: MONDAY, DECEMBER 12TH BY APPOINTMENT

CNC MAZAK LASERS, FLOW WATERJET, MACHINE SHOP, FORKLIFT AND MORE



FLOW,
713633-1,
CNC WATERJET
ONLY
3500 HOURS,
2006



MAZAK,
SPACE
GEAR-48MKII,
2500 WATT,
3D CNC LASER,
2006



MAZAK,
TURBO-XJR,
1000 WATT,
CNC LASER



LILIAN,
5V,
TURRET MILL



HYSTER,
S50XM,
FORKLIFT



MAS,
VO32,
4' RADIAL
ARM DRILL

UPCOMING AUCTIONS

NEW (2019) NEVER USED SWEED 1000 LBS PER HOUR WIRE &
CABLE SEPARATION SYSTEM

SALES CLOSING - DECEMBER 13TH • 2:30 PM ET

80 Midwest Road • Unit 1 • Toronto, Ontario

INSPECTION: MONDAY DECEMBER 12 FROM 9AM TO 5PM BY APPOINTMENT.

CRANE TRUCKS, FLATBEDS AND TILT N LOADS TRUCKS, PICKUPS,
SKYJACKS, FORKLIFTS, SKIDSTEER, WELDERS & SHOP EQUIPMENT

SALES CLOSING - DECEMBER 14TH • 10:30 AM ET

4 Baker Road • Toronto, Ontario

INSPECTION: TUESDAY, DECEMBER 13TH FROM 9AM TO 5PM OR BY APPOINTMENT

VISIT WWW.PLATINUMASSETS.COM FOR MORE INFORMATION



PLATINUM
Asset Services

Auctioneers • Appraisers • Financiers

416.366.2326

BidSpotter

December

12/01/22 to 12/21/22	Resell CNC	ONLINE AUCTION	Portland, OR	View >
12/01/22	Machinery Network Auctions	ONLINE AUCTION	Online	View >
12/01/22	Perkins Industrial Services	ONLINE AUCTION	Wauwatosa, WI	View >
12/05/22 to 12/20/22	Resell CNC	ONLINE AUCTION	Jacksonville, FL	View >
12/05/22 to 12/15/22	Resell CNC	ONLINE AUCTION	Belgrade, MT	View >
12/06/22	Industrial Machinery Tools, Inc. Auctions	TIMED ONLINE BIDDING	Online	View >
12/06/22	Arizona Auctioneers, LLC	TIMED AUCTION	Phoenix, AZ	View >
12/07/22	Country Boys Auction	ONLINE AUCTION	Rocky Mount, NC	View >
12/07/22 to 12/08/22	Machinery Network Auctions	ONLINE AUCTION	Upland, CA	View >
12/07/22 to 12/08/22	Industrial Auction Services, LLC	ONLINE AUCTION	Medford, NJ	View >
12/07/22	Hypersales, Inc.	ONLINE AUCTION	Indianapolis, IN	View >
12/07/22	Myron Bowling Auctioneers, Inc.	WEBCAST ONLY AUCTION	Evansville, IN	View >
12/10/22	Auctions Unlimited Inc	LIVE AUCTION ONLY	Ellenboro, NC	View >
12/15/22	Capital Recovery Group, LLC	ONLINE INTERNET BIDDING ONLY	Springfield, MA	View >